

**Addendum to the Report “Evaluation of Price’s Run Weed and Seed”  
Drug and Violent Crime Trends in Wilmington - 2010**

July 2012



State of Delaware  
Criminal Justice Council  
Statistical Analysis Center  
410 Federal Street, Suite 6  
Dover, Delaware 19901



Addendum to the Report "Evaluation of Price's Run Weed and Seed"  
Drug and Violent Crime Trends in Wilmington - 2010

July 2012

Criminal Justice Council  
Statistical Analysis Center  
Thomas F. MacLeish, Interim Director

Author:  
Richard J. Harris, Senior Analyst

This addendum updates the September 2010 Statistical Analysis Center report “Evaluation of Price’s Run Weed and Seed” to include 2010 drug and violent crime statistics as required by Criminal Justice Council grant PW10-102



## Introduction

The current Weed and Seed site, Census Tract 6.02, is located on the southeastern edge of the Price's Run neighborhood in northeast Wilmington. To date, the Price's Run Weed and Seed initiative has received \$650,000 in federal monies from the Community Capacity Development Office for enhanced law enforcement in the Weed and Seed area, community policing activities, and a number of youth development programs.

This following analysis examines crime trends in the Price's Run Weed and Seed area and the City of Wilmington using criminal complaint and arrest data to measure changes in the occurrence and location of violent and drug related crime. This study examines trends in reported crimes and arrests during calendar year 2010. As in previous years, this information was geocoded by neighborhood, census tract, and reporting grid. The included maps reflect yearly changes in the location and volume of reported crime and arrests. A description of the color scheme used for the index maps is shown below.

### Wilmington Crime Index Categories

**Stable Areas (Blue)** – Complaints were below the city average for the current year

**Crime is Down (Green)** – Complaints were higher than the city average and both arrests and complaints were lower than the previous year

**Arrests are Up (Light Green)** – Complaints were higher than the city average, complaints were lower or the equal to the previous year, and arrests were higher than the previous year.

**At Risk (Yellow)** – Complaints were above the city average but less than the high crime threshold of 50 complaints (for violent crime) or 35 complaints (for drug crime), complaints and arrests were higher than or equal to the previous year.

**Hot Spots (Orange)** – High crime areas with at least 50 violent crime complaints or 35 drug complaints in the current year, complaints were higher than the previous year, and arrests were higher than or equal to the previous year.

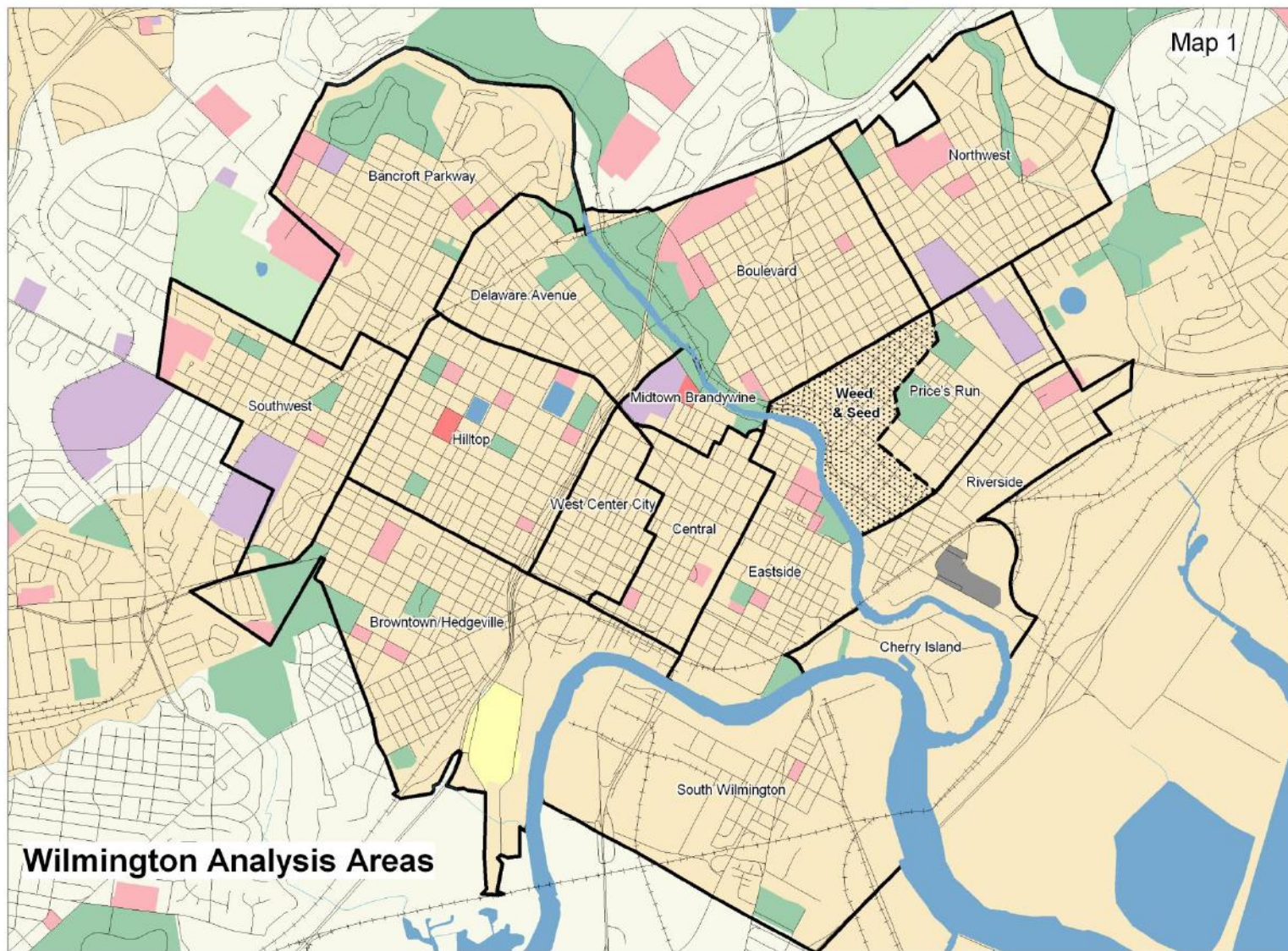
**Saturated (Red)** – High crime areas with at least 65 violent crime complaints or 50 drug complaints in the current year, complaints were higher than the previous year, but arrests were lower than the previous year.

**Table 1**  
**Wilmington Analysis Areas, Census Tracts and Grids**

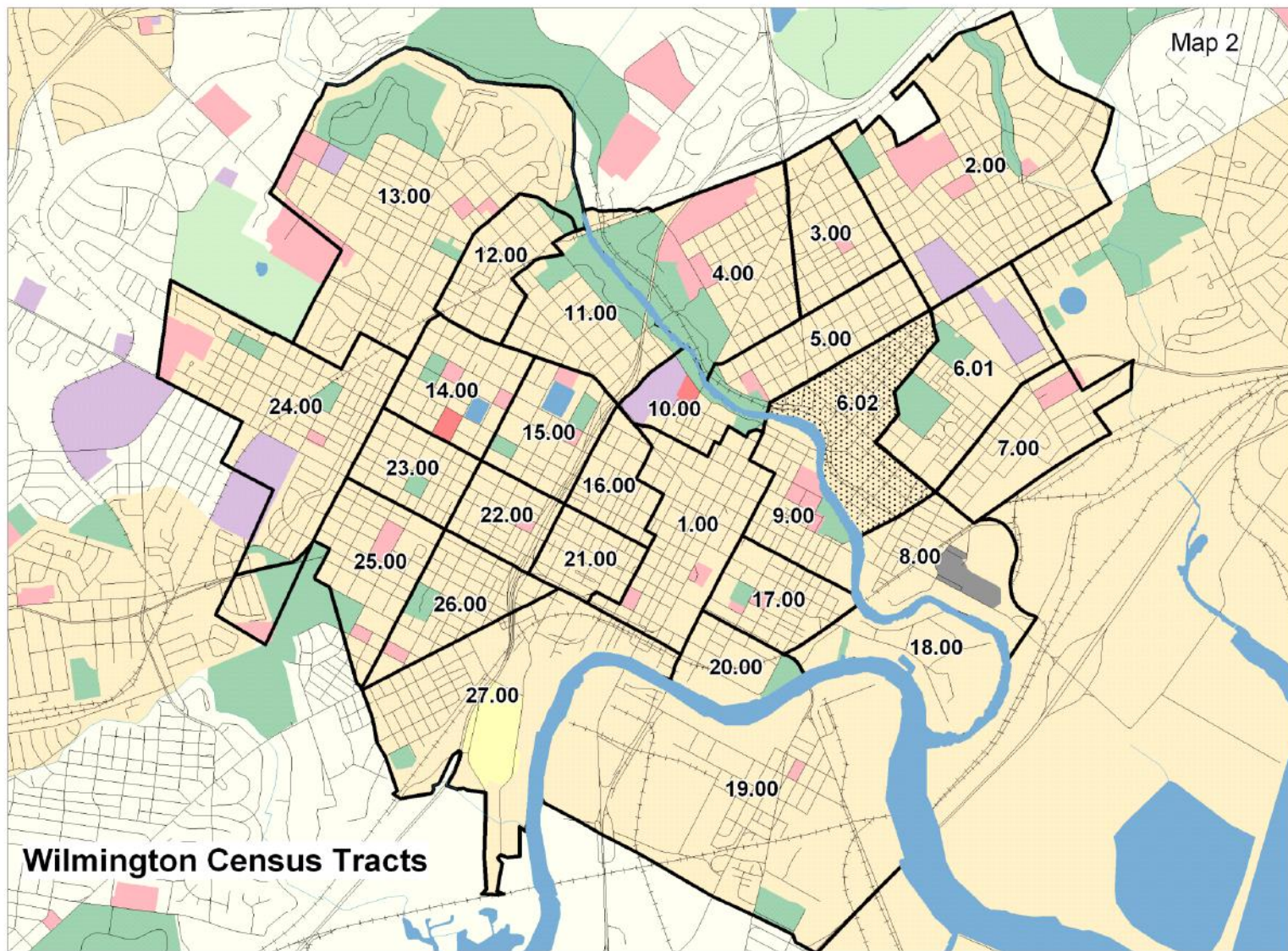
<b>Analysis Area</b>	<b>Census Tract</b>	<b>Grid</b>
Central	1	0101, 0102, 0103, 0104, 0105, 0106
Northwest	2	0201, 0202, 0203, 0204, 0205, 0206
Boulevard	3	0301, 0302
	4	0401, 0402, 0403, 0404
	5	0501, 0502
Price's Run	6.01	0601, 0602*, 0604*
	6.02	0602*, 0603, 0604*, 0605
Riverside	7	0701, 0702
	8	0801, 0802
Eastside	9	0901, 0902, 0903, 0904
	17	1701, 1702, 1703, 1704
	20	2001
Midtown Brandywine	10	1001, 1002
Delaware Avenue	11	1101, 1102, 1103
	12	1201, 1202
Bancroft Parkway	13	1301, 1302, 1303, 1304, 1305, 1306
Hilltop	14	1401, 1402
	15	1501, 1502,
	22	2201, 2202
	23	2301, 2302
West Center City	16	1601, 1602
	21	2101, 2102
Cherry Island	18	1801, 1802
South Wilmington	19	1901, 1902, 1903, 1904, 1905, 1906, 1907, 1908, 1909
Southwest	24	2401, 2402, 2403, 2404, 2405
Browntown/Hedgeville	25	2501, 2502, 2503, 2504
	26	2601, 2602
	27	2701, 2702

\*Parts of Grids 0602 and 0604 lie within the boundaries of Census Tracts 6.01 and 6.02

Table 1 above demonstrates the relationships between the city's analysis areas, census tracts, and reporting grids. Map 1, on page 3, shows the locations of the city's 15 analysis areas, and Map 2 (page 4) shows the locations of the city's 28 census tracts. A map of the city's reporting grids and a corresponding table breaking the crimes out by grid are included in the appendices.







## **Violent Crime in Wilmington – 2010**

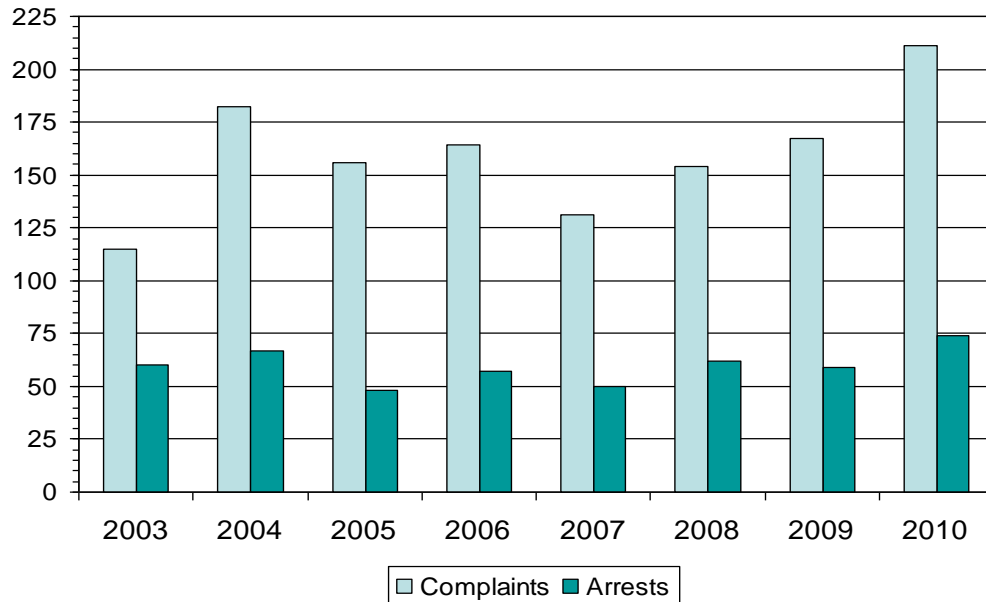
Violent crime complaints in Wilmington increased by 22.4 percent in 2010 to 2,590 complaints. Nineteen of the city's 28 census tracts reported an increase in violent crime in 2010. The increase in violent crime complaints was fueled in part by a 35.8 percent increase in reported burglaries and a 22.2 percent increase in reported robberies. Arrests for violent crimes were down 4.2 percent in Wilmington, from 874 arrests in 2009 to 837 arrests in 2010.

Neighborhoods in Wilmington where violent crime complaints increased significantly in 2010 include Browntown/Hedgeville, Eastside, Hilltop, and Price's Run. Table 2 shows an increase in reported violent crime in parts of the city's Eastside, Northwest, Price's Run, and Riverside neighborhoods and an increase in the number of areas where violent crime complaints and arrests were significantly higher than the city average in the city's Hilltop Price's Run and Eastside neighborhoods. The Browntown/Hedgeville neighborhood (Census Tracts 25, 26, and 27) generated more violent crime complaints than any other neighborhood in Wilmington in 2010 with 427 complaints. Grid 2701, located southeast of Maryland Avenue and west of the Amtrak viaduct, generated 133 violent crime complaints in 2010, more than any other single grid in Wilmington.

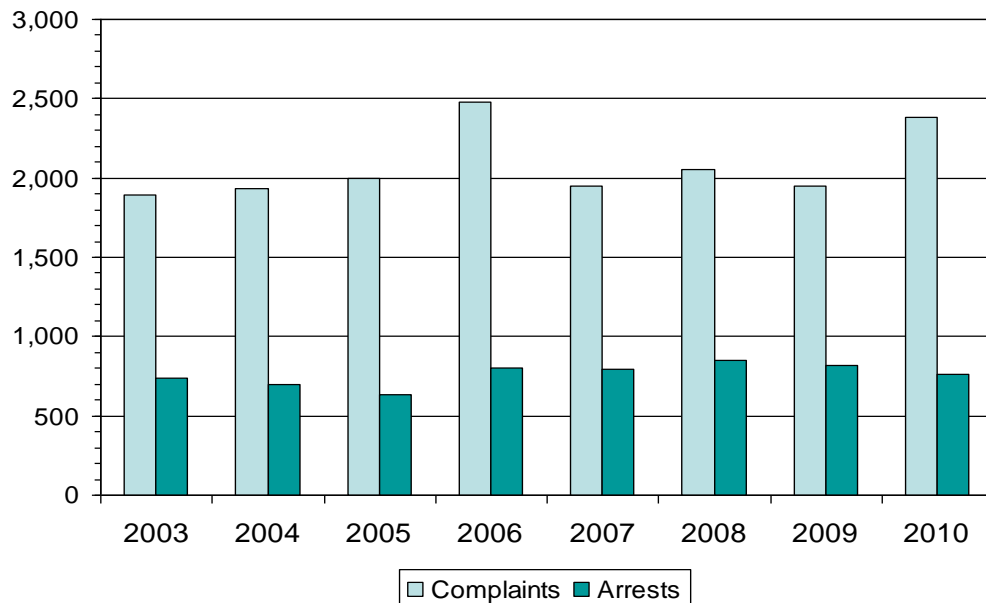
The Price's Run Weed and Seed area/Census Tract 6.02 surpassed all other census tracts in Wilmington for reported violent crimes and arrests for violent crimes in 2010. Census Tract 6.02 generated 211 violent crime complaints in 2010, an increase of 26.3 percent over the 2009 total of 167 complaints. Violent crime arrests in Census Tract 6.02 were up 25.4 percent, from 59 arrests in 2009 to 74 arrests in 2010.

Grid 0603, located east of Market Street continues to generate more violent crime complaints than any other grid in the Weed and Seed area. Grid 0603 alone accounted for 126 violent crime complaints, or 57.7 percent the 211 violent crime complaints generated from Census Tract 6.02 in 2010. Map 4 also shows an increase in reported crime in Census Tract 6.01 located adjacent to the Weed and Seed Site between Vandever Avenue and 30<sup>th</sup> St. Census Tract 6.01 generated 101 violent crime complaints in 2010, an increase of 94.2 percent compared to the 2009 total of 52 complaints.

**Chart 1**  
**Violent Crime Complaints and Arrests in the Price's Run**  
**Weed and Seed Area - Census Tract 6.02**



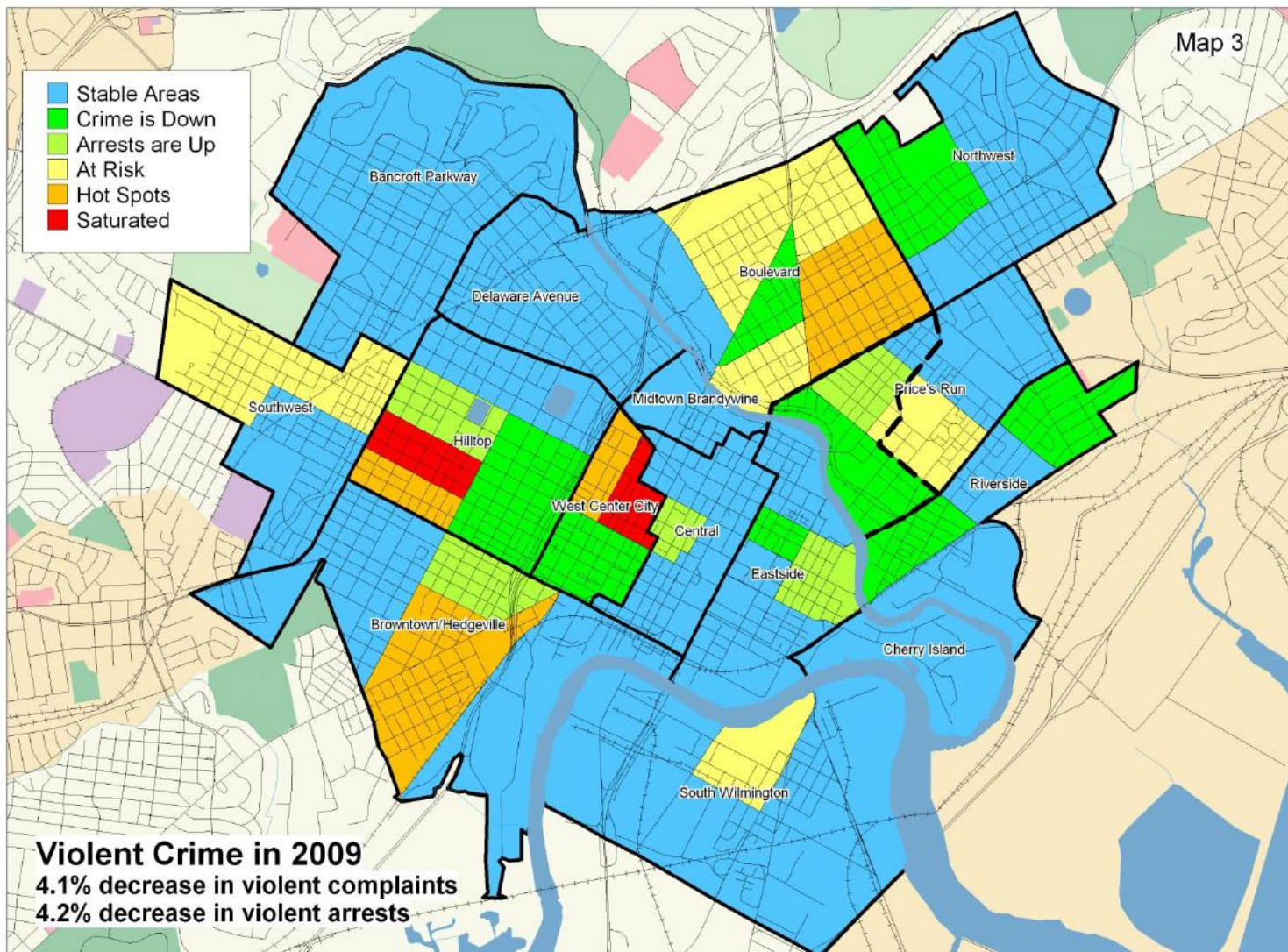
**Chart 2**  
**Violent Crime Complaints and Arrests in Wilmington**  
**(Census Tract 6.02 Not Included)**



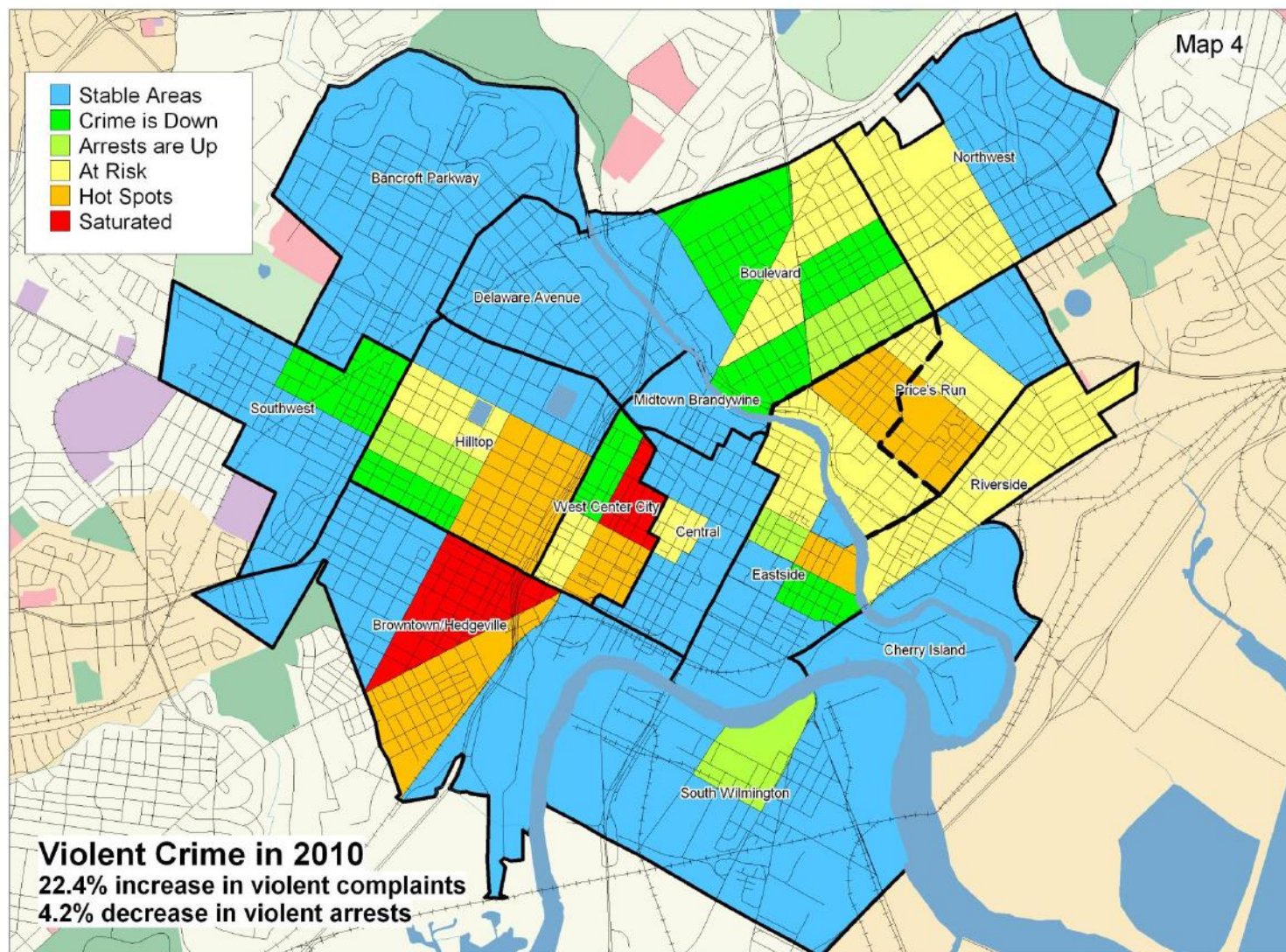
**Table 2**  
**Violent Crime Complaints and Arrests by Census Tract**

Analysis Area	Census Tract	2003		2004		2005		2006		2007		2008		2009		2010	
		Complaints	Arrests	Complaints	Arrests	Complaints	Arrests	Complaints	Arrests	Complaints	Arrests	Complaints	Arrests	Complaints	Arrests	Complaints	Arrests
Central	01.00	94	28	104	55	118	33	131	37	109	44	114	52	85	48	104	41
Northwest	02.00	70	25	80	22	81	19	128	27	111	22	104	43	98	38	133	40
Boulevard	03.00	57	25	75	14	53	23	103	21	88	28	87	24	97	28	95	26
	04.00	60	16	44	19	45	9	100	16	72	24	79	28	85	43	82	21
	05.00	104	58	148	61	111	28	135	62	111	52	134	52	163	65	146	53
Price's Run	06.01	50	23	70	23	83	26	89	34	75	30	94	35	52	18	101	29
	<b>06.02</b>	<b>115</b>	<b>60</b>	<b>182</b>	<b>67</b>	<b>156</b>	<b>48</b>	<b>164</b>	<b>57</b>	<b>131</b>	<b>50</b>	<b>154</b>	<b>62</b>	<b>167</b>	<b>59</b>	<b>211</b>	<b>74</b>
Riverside	07.00	52	20	55	26	53	26	48	24	50	29	52	40	49	17	70	37
	08.00	23	7	31	12	31	3	29	10	26	17	40	17	37	15	43	12
Eastside	09.00	73	37	91	38	77	20	115	54	85	30	97	45	84	44	126	43
	17.00	99	31	103	45	119	40	133	54	89	40	115	55	94	58	89	41
	20.00	16	6	27	13	21	7	27	11	23	15	27	16	22	10	26	10
Midtown Brandywine	10.00	20	5	12	2	12	2	25	11	12	5	7		8	4	15	4
Delaware Avenue	11.00	49	7	39	8	63	7	58	7	45	20	16	7	30	15	52	10
	12.00	29	6	28	11	35	9	40	17	30	15	29	13	27	11	35	8
Bancroft Parkway	13.00	39	4	22	3	28	4	49	5	24		23	10	27		20	2
Hilltop	14.00	40	19	46	14	48	8	68	19	40	9	43	9	44	14	52	8
	15.00	74	28	63	19	75	23	72	24	41	13	52	17	50	14	73	18
	22.00	131	53	137	50	117	58	140	63	107	44	144	66	85	33	124	53
	23.00	166	71	139	51	166	73	182	49	142	83	131	66	141	51	133	49
West Center City	16.00	85	46	121	41	85	43	134	45	114	41	109	51	116	56	110	30
	21.00	104	35	79	38	109	40	137	51	89	37	134	47	89	44	114	51
Cherry Island	18.00	5	1	4		3		3		2		5	5	4	1	9	1
South Wilmington	19.00	104	46	79	32	101	15	89	39	69	39	81	31	96	33	84	31
Southwest	24.00	96	22	90	26	91	27	129	34	103	33	80	26	118	48	116	39
Browntown/Hedgeville	25.00	71	30	68	23	67	20	80	19	51	23	57	25	46	14	83	22
	26.00	128	57	118	36	124	52	162	34	140	55	131	48	129	69	204	48
	27.00	57	32	60	16	84	21	71	32	105	46	67	22	73	24	140	36
<b>Total</b>		<b>2,011</b>	<b>798</b>	<b>2,115</b>	<b>765</b>	<b>2,156</b>	<b>684</b>	<b>2,641</b>	<b>856</b>	<b>2,084</b>	<b>844</b>	<b>2,206</b>	<b>912</b>	<b>2,116</b>	<b>874</b>	<b>2,590</b>	<b>837</b>
<b>CT 6.02 Not Included</b>		<b>1,896</b>	<b>738</b>	<b>1,933</b>	<b>698</b>	<b>2,000</b>	<b>636</b>	<b>2,477</b>	<b>799</b>	<b>1,953</b>	<b>794</b>	<b>2,052</b>	<b>850</b>	<b>1,949</b>	<b>815</b>	<b>2,379</b>	<b>763</b>











## **Drug Crime in Wilmington – 2010**

Illicit drug complaints in Wilmington decreased by 6.8 percent in 2010 to 1,170 complaints. This compares to a 2009 total of 1,256 drug complaints. 2010 was the second consecutive year of declining drug complaints in Wilmington. Of the 1,170 drug related complaints reported in 2010, 430 (36.8 percent) involved drug distribution, PWID, or trafficking of illicit drugs. Table 3 shows that 13 of the city's 28 census tracts reported fewer drug related crimes in 2010. Drug related arrests in Wilmington were down 8.5 percent in 2010, from 1,408 arrests in 2009 to 1,288 arrests. Arrests for distribution, PWID, or trafficking of illicit drugs accounted for 659, or 51.2 percent of all drug related arrests made in Wilmington in 2010.

Two Wilmington neighborhoods - Price's Run and Riverside - experienced the most significant declines in drug related complaints in 2010. Drug related complaints were also down to a lesser degree in the Browntown/Hedgeville and the Eastside neighborhoods. Map 6 shows fewer "At Risk" areas and an increase in the number of grids that generated fewer drug related complaints and arrests compared with the previous year.

Drug related complaints and arrests in the Price's Run Weed and Seed area/Census Tract 6.02 decreased at an even greater rate in 2010 than the city overall. Census Tract 6.02 generated 104 illicit drug related complaints in 2010, 38.1 percent fewer than the 2009 total of 168 complaints. Thirty-six (34.6 percent) of the 104 Weed and Seed area drug complaints involved drug distribution, trafficking, or PWID. Drug related arrests in Census Tract 6.02 were down 39.2 percent in 2010 to 115 arrests. Sixty (52.2 percent) of the 115 Weed and Seed drug arrests involved distribution of illicit drug, drug trafficking, or PWID.

Map 6 shows that illicit drug related complaints and arrests were down in most of the Weed and Seed area's grids in 2010. The exception was Grid 0602, which generated more drug related complaints and fewer drug arrests compared to the previous year.



Chart 3  
**Drug Crime Complaints and Arrests in the Price's Run  
 Weed and Seed Area - Census Tract 6.02**

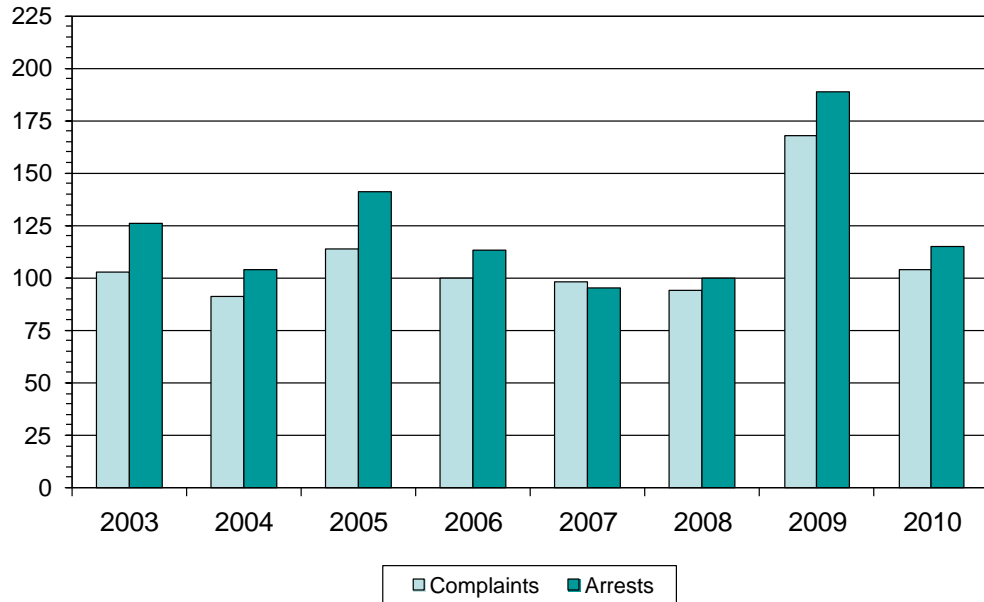
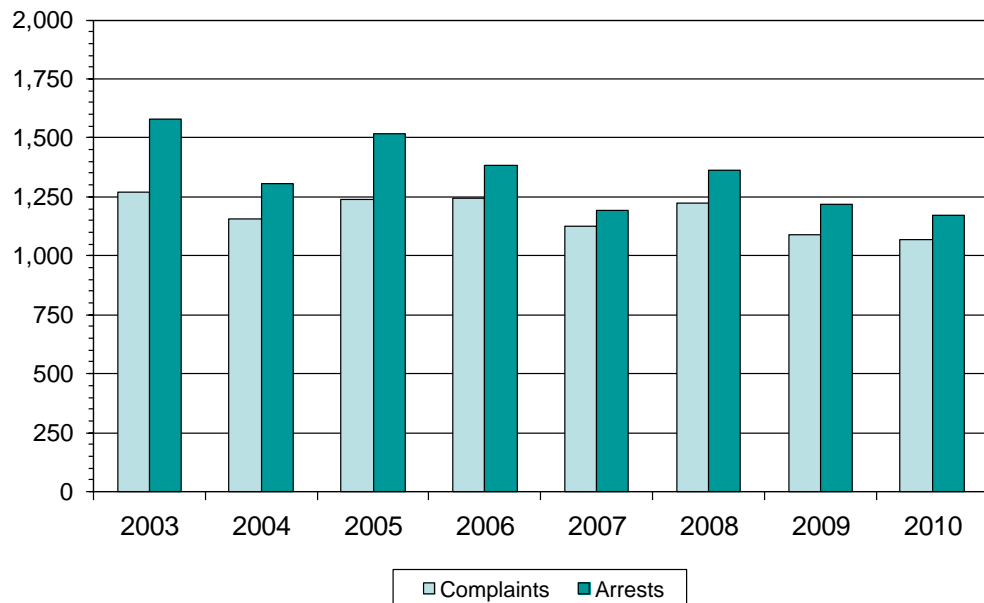
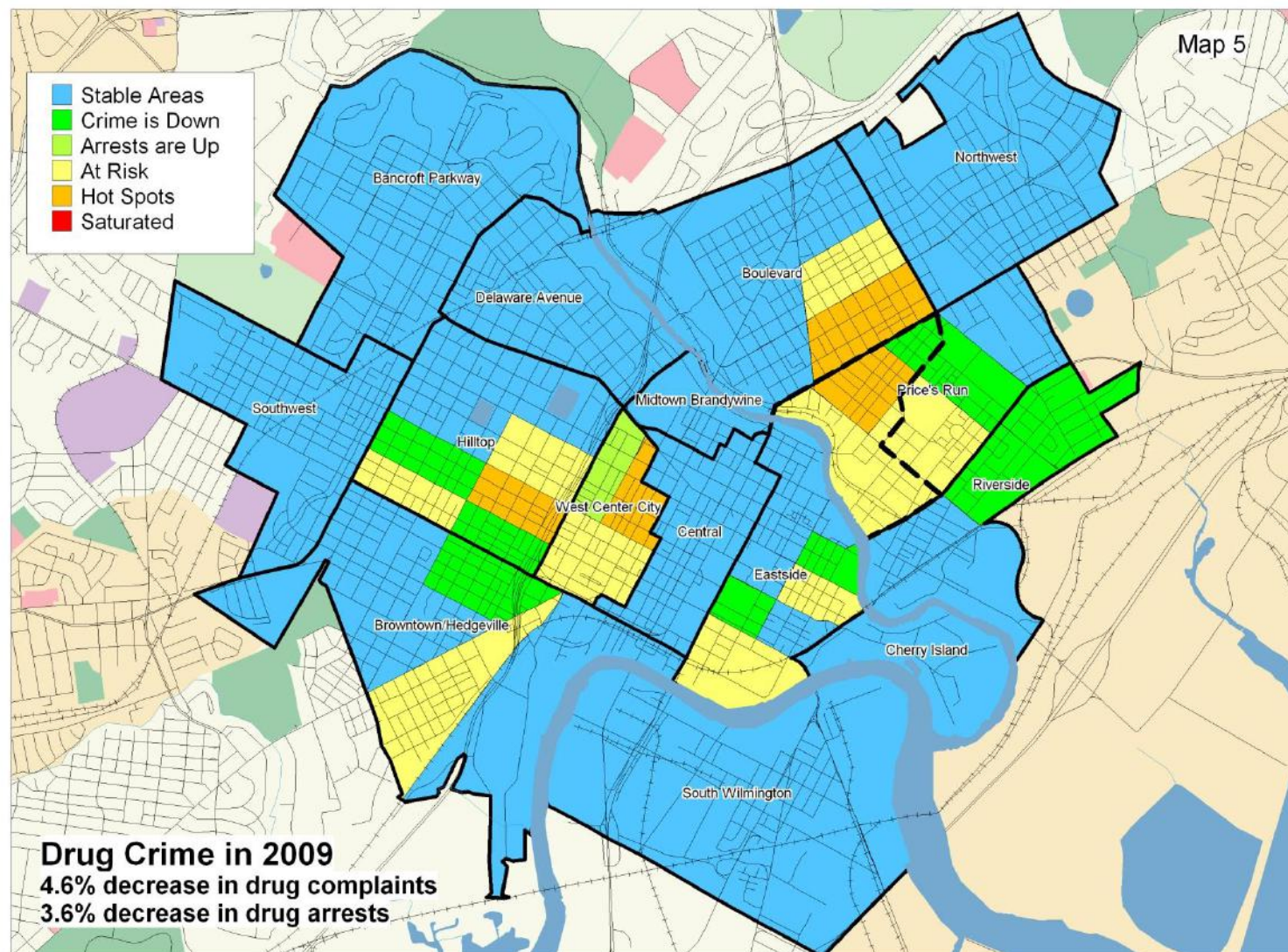


Chart 4  
**Drug Crime Complaints and Arrests in Wilmington  
 (Census Tract 6.02 Not Included)**

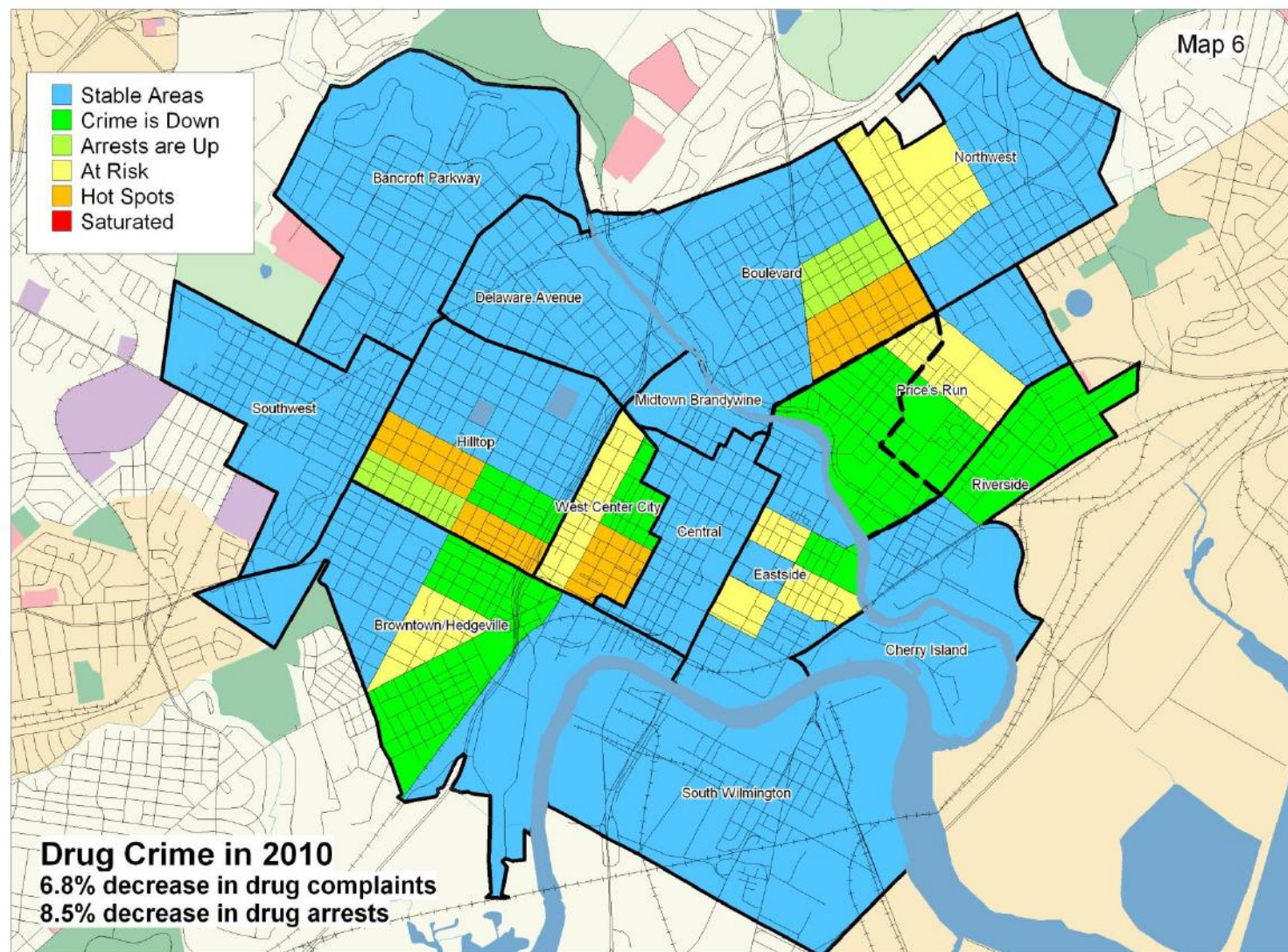


**Table 3**  
**Drug Crime Complaints and Arrests by Census Tract**

Analysis Area	Census Tract	2003		2004		2005		2006		2007		2008		2009		2010	
		Complaints	Arrests	Complaints	Arrests	Complaints	Arrests	Complaints	Arrests	Complaints	Arrests	Complaints	Arrests	Complaints	Arrests	Complaints	Arrests
Central	01.00	48	57	44	46	46	55	49	54	38	39	34	36	41	50	39	40
Northwest	02.00	11	13	9	9	21	30	19	21	21	24	17	18	32	32	33	43
Boulevard	03.00	20	25	12	15	20	30	21	29	33	30	25	28	39	39	46	54
	04.00	12	15	4	6	6	12	13	12	11	7	9	12	16	21	24	27
	05.00	69	81	61	64	71	87	76	92	29	36	49	53	83	82	79	85
Price's Run	06.01	36	39	46	46	39	48	55	50	39	40	66	57	61	67	43	46
	<b>06.02</b>	<b>103</b>	<b>126</b>	<b>91</b>	<b>104</b>	<b>114</b>	<b>141</b>	<b>100</b>	<b>113</b>	<b>98</b>	<b>95</b>	<b>94</b>	<b>100</b>	<b>168</b>	<b>189</b>	<b>104</b>	<b>115</b>
Riverside	07.00	160	201	145	173	175	204	79	95	82	100	155	201	83	105	64	74
	08.00	26	33	18	19	22	26	15	13	19	21	30	33	7	14	12	13
Eastside	09.00	103	130	123	138	73	85	44	53	56	55	53	55	47	58	48	54
	17.00	49	56	56	60	79	85	87	95	71	70	71	73	53	50	60	66
	20.00	8	11	16	20	10	13	17	15	17	16	13	13	27	30	10	12
Midtown Brandywine	10.00	1	1	6	6	2	2	2	5	4		1	1	3	4	4	4
Delaware Avenue	11.00	6	9	6	7	11	11	9	8	15	12	5	7	5	3	3	4
	12.00	7	14	4	5	4	5	5	4	7	7	4	6	6	4	4	4
Bancroft Parkway	13.00	4	5	1	1	2	1	6	4	7	1	5	6	3	2	1	1
Hilltop	14.00	12	16	7	9	12	14	18	18	19	16	12	13	8	9	15	14
	15.00	42	56	31	37	51	62	38	45	23	25	20	20	25	27	18	24
	22.00	174	225	141	164	142	173	177	187	187	208	173	208	125	140	107	113
	23.00	145	176	144	164	165	203	175	194	160	177	197	228	150	161	161	185
West Center City	16.00	99	111	55	55	83	104	88	81	64	67	75	76	86	102	93	104
	21.00	110	132	92	97	84	80	88	99	84	91	63	65	68	80	72	77
Cherry Island	18.00			2	4	4	6					3	3	1	1	1	2
South Wilmington	19.00	48	66	67	70	29	44	41	54	33	33	28	25	23	25	27	26
Southwest	24.00	15	20	16	17	16	22	30	37	26	29	15	14	10	15	20	23
Browntown/Hedgeville	25.00	15	22	9	11	12	27	21	31	13	17	16	20	18	22	18	15
	26.00	30	39	30	47	37	52	47	41	39	41	63	70	45	49	42	37
	27.00	19	24	9	15	24	35	24	45	28	32	21	20	23	27	22	26
<b>Total</b>		<b>1,372</b>	<b>1,703</b>	<b>1,245</b>	<b>1,409</b>	<b>1,354</b>	<b>1,657</b>	<b>1,344</b>	<b>1,495</b>	<b>1,223</b>	<b>1,289</b>	<b>1,317</b>	<b>1,461</b>	<b>1,256</b>	<b>1,408</b>	<b>1,170</b>	<b>1,288</b>
<b>CT 6.02 Not Included</b>		<b>1,269</b>	<b>1,577</b>	<b>1,154</b>	<b>1,305</b>	<b>1,240</b>	<b>1,516</b>	<b>1,244</b>	<b>1,382</b>	<b>1,125</b>	<b>1,194</b>	<b>1,223</b>	<b>1,361</b>	<b>1,088</b>	<b>1,219</b>	<b>1,066</b>	<b>1,173</b>







## **Sentencing Outcomes for Weed and Seed Offenders**

Table 4 shows Superior Court, Court of Common Pleas and Family Court dispositions for violent and drug offenders arrested in the Weed and Seed area in 2009. 182 of the 189 (96.3 percent) of the drug arrests, 54 (91.5 percent) of the 59 violent crime arrests made in Weed and Seed area in 2009 were present in the state's court record system. Weed and Seed area arrests that included both violent and drug charges were identified in the records as well. Court dispositions for drug and violent crime offenders arrested in other parts of Wilmington in 2009 are also displayed for comparative purposes.

Based on the available disposition data, Weed and Seed drug cases were convicted at a greater rate than Wilmington cases overall, however, Weed and Seed drug offenders were sentenced to Level V incarceration at a lower rate and received shorter incarceration sentences than drug offenders arrested outside of the Weed and Seed area. In cases that involved violent crimes, Weed and Seed offenders were less likely to be convicted or sentenced to Level V incarceration than those offenders who were arrested in other parts of Wilmington.

189 drug offenders were arrested in the Weed and Seed area in 2009. 182 of these cases were heard in Delaware courts as of 06/04/2011. 122 (67 percent) of the 182 Weed and Seed drug cases resulted in a conviction. 35 (19.2 percent) of the 182 Weed and Seed drug defendants received a Level V incarceration. The average incarceration sentence given to Weed and Seed drug defendants was 6.9 months. Table 4 shows that the 67 percent conviction rate for Weed and Seed drug cases was slightly higher than the 61.1 percent conviction rate for Wilmington drug cases. However, the incarceration rate (22.8 percent) and average incarceration sentence (21.2 months) for Wilmington drug cases were higher compared to those for Weed and Seed.

Weed and Seed court cases that included a violent offense were convicted and incarcerated at lower rate on average than comparable Wilmington cases. Table 4 shows 54 Weed and Seed cases included at least one violent offense. The conviction rate for Weed and Seed cases was 37 percent, the incarceration rate was 22.2 percent, and the average incarceration sentence was 33.9 months. In comparison, Wilmington cases that included at least one violent crime offense had a 44.5 percent conviction rate, a 23.8 percent conviction rate, and an average incarceration sentence of 141.3 months.

For court cases where a drug offenses and violent offense were both present in a case, Weed and Seed cases had a 66.7 percent conviction rate and a 16.7 percent incarceration rate with an average incarceration sentence of 36 months. Wilmington drug cases that included a accompanying violent offense had a conviction rate of 72.1 percent and an incarceration rate of 29.5 percent with an average incarceration sentence of 18.7 months.

**Table 4**  
**Sentencing Outcomes for Violent and Drug Crime Offenders Arrested in the Weed and Seed Area**

	All 2009 Cases	Convicted	L5 Incarceration	Avg. L5 Sentence (Months)	Probation	Fine Only	Not Convicted	Not Guilty	Pending	Transferred	Case Dismissed
<b>Sentencings for Weed and Seed Arrests</b>	<b>242</b>	<b>146</b>	<b>48</b>	<b>14.3</b>	<b>70</b>	<b>28</b>	<b>96</b>	<b>2</b>	<b>7</b>	<b>2</b>	<b>85</b>
<i>Percent</i>	<i>100.0%</i>	<i>60.3%</i>	<i>19.8%</i>	<i>-</i>	<i>28.9%</i>	<i>11.6%</i>	<i>39.7%</i>	<i>0.8%</i>	<i>2.9%</i>	<i>0.8%</i>	<i>35.1%</i>
Arrests with Drug Charges	182	122	35	6.9	60	27	60	0	6	1	53
<i>Percent</i>	<i>100.0%</i>	<i>67.0%</i>	<i>19.2%</i>	<i>-</i>	<i>33.0%</i>	<i>14.8%</i>	<i>33.0%</i>	<i>0.0%</i>	<i>3.3%</i>	<i>0.5%</i>	<i>29.1%</i>
Arrests with Violent Charges	54	20	12	33.9	7	1	34	2	1	1	30
<i>Percent</i>	<i>100.0%</i>	<i>37.0%</i>	<i>22.2%</i>	<i>-</i>	<i>13.0%</i>	<i>1.9%</i>	<i>63.0%</i>	<i>3.7%</i>	<i>1.9%</i>	<i>1.9%</i>	<i>55.6%</i>
Arrests with Drug and Violent Charges	6	4	1	36.0	3	0	2	0	0	0	2
<i>Percent</i>	<i>100.0%</i>	<i>66.7%</i>	<i>16.7%</i>	<i>-</i>	<i>50.0%</i>	<i>0.0%</i>	<i>33.3%</i>	<i>0.0%</i>	<i>0.0%</i>	<i>0.0%</i>	<i>33.3%</i>
<b>Sentencings for Wilmington Arrests*</b>	<b>1,977</b>	<b>1,089</b>	<b>462</b>	<b>67.9</b>	<b>484</b>	<b>143</b>	<b>888</b>	<b>3</b>	<b>66</b>	<b>19</b>	<b>800</b>
<i>Percent</i>	<i>100.0%</i>	<i>55.1%</i>	<i>23.4%</i>	<i>-</i>	<i>24.5%</i>	<i>7.2%</i>	<i>44.9%</i>	<i>0.2%</i>	<i>3.3%</i>	<i>1.0%</i>	<i>40.5%</i>
Arrests with Drug Charges	1,159	708	264	21.2	311	133	451	0	47	7	397
<i>Percent</i>	<i>100.0%</i>	<i>61.1%</i>	<i>22.8%</i>	<i>-</i>	<i>26.8%</i>	<i>11.5%</i>	<i>38.9%</i>	<i>0.0%</i>	<i>4.1%</i>	<i>0.6%</i>	<i>34.3%</i>
Arrests with Violent Charges	757	337	180	141.3	148	9	420	3	18	12	387
<i>Percent</i>	<i>100.0%</i>	<i>44.5%</i>	<i>23.8%</i>	<i>-</i>	<i>19.6%</i>	<i>1.2%</i>	<i>55.5%</i>	<i>0.4%</i>	<i>2.4%</i>	<i>1.6%</i>	<i>51.1%</i>
Arrests with Drug and Violent Charges	61	44	18	18.7	25	1	17	0	1	0	16
<i>Percent</i>	<i>100.0%</i>	<i>72.1%</i>	<i>29.5%</i>	<i>-</i>	<i>41.0%</i>	<i>1.6%</i>	<i>27.9%</i>	<i>0.0%</i>	<i>1.6%</i>	<i>0.0%</i>	<i>26.2%</i>

\*Weed and Seed area arrests are not included

## **Appendices**







**Table 5**  
**Violent Crime Complaints and Arrests by Neighborhood, Census Tract and Grid (Page 1 of 2)**

Analysis Area	Census Tract	Grid	2003		2004		2005		2006		2007		2008		2009		2010	
			Complaints	Arrests	Complaints	Arrests	Complaints	Arrests	Complaints	Arrests	Complaints	Arrests	Complaints	Arrests	Complaints	Arrests	Complaints	Arrests
Central	01.00	0101	26	7	29	26	23	9	33	11	16	13	27	15	17	8	15	4
		0102	10	1	18	10	12	5	13	3	22	8	10	8	14	7	13	7
		0103	27	9	30	9	41	14	42	9	27	10	41	17	28	24	37	15
		0104	5	1	4	1	8	2	2		14	3	4	1	4	1	10	4
		0105	11	2	10	2	21	2	25	11	15	4	19	10	14	7	15	3
		0106	15	8	13	7	13	1	16	3	15	6	13	1	8	1	14	8
Northwest	02.00	0201			9	2	11		8		5		8	2	8	1	8	1
		0202	2		2		2		3	1	2		1		2		12	3
		0203	6	9	8	2	10	3	11	6	14	5	8	2	11	12	17	1
		0204	17	7	18	6	8	3	10	4	15	5	16	9	23	4	15	10
		0205	35	8	33	12	33	11	54	8	53	5	47	24	39	14	43	16
		0206	10	1	10		17	2	42	8	22	7	24	6	15	7	38	9
Boulevard	03.00	0301	24	9	23	5	9	5	33	7	32	6	30	3	31	7	38	5
		0302	33	16	52	9	44	18	70	14	56	22	57	21	66	21	57	21
	04.00	0401	27	7	16	8	20	4	39	4	31	10	31	7	42	18	37	7
		0402	32	9	24	11	23	5	58	12	40	12	46	19	37	16	42	11
		0403			4		2		3		1	2	2	2	6	9	2	
		0404	1												1		3	
	05.00	0501	26	11	41	14	23	5	45	11	32	13	30	10	46	22	34	6
		0502	78	47	107	47	88	23	90	51	79	39	104	42	117	43	112	47
Price's Run	06.01 + 06.02	0601	26	16	27	10	40	8	26	11	26	13	33	18	18	2	27	6
		0602	27	9	44	16	30	10	50	18	40	13	35	16	23	8	47	15
		0603	50	39	109	39	72	22	91	27	73	23	103	30	102	33	126	46
		0604	22	9	41	13	42	12	44	16	36	14	33	16	39	16	66	18
		0605	40	10	31	12	55	22	42	19	31	17	44	17	37	18	46	18
Riverside	07.00	0701	32	12	22	16	28	13	28	13	20	13	28	17	26	8	30	14
		0702	20	8	33	10	25	13	20	11	30	16	24	23	23	9	40	23
	08.00	0801	23	6	28	9	26	2	29	10	24	17	38	14	30	12	41	12
		0802		1	3	3	5	1			2		2	3	7	3	2	
Eastside	09.00	0901	17	7	22	6	19	3	31	7	23	9	20	8	22	14	36	7
		0902	1		3				3		2	1	6	4	1		5	2
		0903	25	13	34	19	20	4	39	22	27	10	31	17	28	8	28	17
		0904	30	17	32	13	38	13	42	25	33	10	40	16	33	22	57	17
	17.00	1701	20	7	21	3	22	13	16	8	17	4	25	17	17	11	18	8
		1702	35	12	34	14	43	12	66	18	35	14	47	17	36	29	31	15
		1703	23	5	34	20	32	12	30	20	22	14	28	15	19	9	19	10
		1704	21	7	14	8	22	3	21	8	15	8	15	6	22	9	21	8
	20.00	2001	16	6	27	13	21	7	27	11	23	15	27	16	22	10	26	10
	10.00	1001	15	5	1	1	5	2	6	3	2	2	3		2	1	1	
		1002	5		11	1	7		19	8	10	3	4		6	3	14	4
Delaware Avenue	11.00	1101	1				1	1	4		4	2	1	1	1		2	
		1102	21	1	18	4	25	1	22	3	15	3	5	1	9	4	23	6
		1103	27	6	21	4	37	5	32	4	26	15	10	5	20	11	27	4
	12.00	1201	7	2	9	2	16	3	19	10	11	4	13	6	13	3	15	4
		1202	22	4	19	9	19	6	21	7	19	11	16	7	14	8	20	4

**Table 5**  
**Violent Crime Complaints and Arrests by Neighborhood, Census Tract and Grid (Page 2 of 2)**

Analysis Area	Census Tract	Grid	2003		2004		2005		2006		2007		2008		2009		2010	
			Complaints	Arrests	Complaints	Arrests	Complaints	Arrests	Complaints	Arrests	Complaints	Arrests	Complaints	Arrests	Complaints	Arrests	Complaints	Arrests
Bancroft Parkway	13.00	1301	3	1			1		2				2					
		1302	1		1		5		3		2		3	3	5		3	1
		1303	3		1	1	2		6				7	3	2		2	
		1304	8		2		3		10		4		1		3		7	1
		1305	6	1	4	1	5		14	3	6		5	2	9		6	
		1306	18	2	14	1	12	4	14	2	12		5	2	8		2	
Hilltop	14.00	1401	19	10	12		18	2	24	9	12	2	11	2	17	4	12	2
		1402	21	9	34	14	30	6	44	10	28	7	32	7	27	10	40	6
	15.00	1501	24	7	17	3	28	4	19	3	11	4	14	2	17	4	20	5
		1502	50	21	46	16	47	19	53	21	30	9	38	15	33	10	53	13
	22.00	2201	64	23	71	32	63	34	80	37	54	25	68	27	46	22	62	24
		2202	67	30	66	18	54	24	60	26	53	19	76	39	39	11	62	29
	23.00	2301	103	43	88	40	102	38	123	34	94	46	79	38	85	30	82	34
		2302	63	28	51	11	64	35	59	15	48	37	52	28	56	21	51	15
West Center City	16.00	1601	42	22	53	19	38	17	64	19	59	23	44	17	50	29	41	9
		1602	43	24	68	22	47	26	70	26	55	18	65	34	66	27	69	21
	21.00	2101	41	13	43	21	53	19	64	28	41	15	56	20	39	19	47	21
		2102	63	22	36	17	56	21	73	23	48	22	78	27	50	25	67	30
Cherry Island	18.00	1801	3	1	3				2		2		4	5	3	1	7	1
		1802	2		1		3		1				1		1		2	
South Wilmington	19.00	1901	7	1	6		14		11	2	6	5	9	1	8	4	10	5
		1902	7	2	8	1	12		1	2	1	1	2		7	4	5	1
		1903	5		3		5		1		4	1	1	1	2	1	3	
		1904	2				3						3	2		1		
		1905	12	8	10	5	19	4	33	22	26	11	25	13	37	9	31	10
		1906	21	8	10	3	13	6	9	2	9	7	10	7	6	5	6	2
		1907		1	2		2	1	5				2		5		2	
		1908	22	12	16	15	16	1	11	7	21	12	16	3	24	7	23	12
		1909	28	14	24	8	17	3	18	4	2	2	13	4	7	2	4	1
Southwest	24.00	2401	12	5	13	5	16	8	9	7	12	6	8		15	6	21	11
		2402	23	3	19	3	25	5	27	3	27	9	16	6	26	9	27	9
		2403	29	12	33	12	37	12	49	6	38	12	34	11	43	23	31	6
		2404	23	1	12	2	5	2	20	10	14	5	10	5	15	4	19	6
		2405	9	1	13	4	8		24	8	12	1	12	4	19	6	18	7
Browntown/Hedgeville	25.00	2501	24	15	20	8	16	10	21	7	20	10	23	10	13	3	22	4
		2502	26	8	19	7	16	2	23	6	15	5	11	4	14	4	26	10
		2503	12	3	19	5	18	3	22	6	7	3	11	3	12	5	20	5
		2504	9	4	10	3	17	5	14		9	5	12	8	7	2	15	3
	26.00	2601	82	37	80	22	79	32	103	19	88	40	84	34	79	43	126	34
		2602	46	20	38	14	45	20	59	15	52	15	47	14	50	26	78	14
	27.00	2701	44	25	49	15	57	18	53	29	91	42	53	21	65	18	133	34
		2702	13	7	11	1	27	3	18	3	14	4	14	1	8	6	7	2

**Table 6**  
**Drug Crime Complaints and Arrests by Neighborhood, Census Tract, and Grid (Page 1 of 2)**

Analysis Area	Census Tract	Grid	2003		2004		2005		2006		2007		2008		2009		2010	
			Complaints	Arrests	Complaints	Arrests	Complaints	Arrests	Complaints	Arrests	Complaints	Arrests	Complaints	Arrests	Complaints	Arrests	Complaints	Arrests
Central	01.00	0101	7	8	6	8	8	9	14	14	5	6	10	8	7	10	2	2
		0102	6	9	20	18	16	16	11	15	5	6	6	6	7	5	11	11
		0103	13	14	7	8	9	14	8	10	13	14	7	6	10	16	7	5
		0104	4	4	2	1	2	3	3	2	4	4	3	6	2	2	6	7
		0105	6	8	4	3	5	7	8	9	3	2	4	5	10	14	5	5
		0106	12	14	5	8	6	6	5	4	8	7	4	5	5	3	8	10
Northwest	02.00	0201					1				1	2	1				3	5
		0202	2	1					1	1					2		2	3
		0203			1	1					2	2	1	2	2	4		
		0204			2	3	4	5	6	6	1	1	3	3	1	3	2	2
		0205	6	8	4	4	10	15	7	9	12	15	5	7	15	13	18	21
		0206	3	4	2	1	6	10	5	5	5	4	7	6	12	12	8	12
Boulevard	03:00	0301	3	3	1	3	3	5	4	6	9	8	4	4	5	4	13	15
		0302	17	22	11	12	17	25	17	23	24	22	21	24	34	35	33	39
	04:00	0401	4	5	2	3	4	10	6	3	2	1	2	3	3	3	11	14
		0402	8	10	1	2	2	2	7	9	9	6	7	8	13	18	13	13
		0403			1	1								1				
		0404																
	05:00	0501	10	10	9	8	8	6	9	9	5	6	5	5	16	18	11	12
		0502	59	71	52	56	63	81	67	83	24	30	44	48	67	64	68	83
Price's Run	06.01 + 06.02	0601	11	12	20	12	12	17	22	25	11	5	13	8	16	12	6	5
		0602	17	22	22	25	12	14	19	17	17	20	29	37	18	21	20	14
		0603	57	66	54	67	71	87	46	45	68	65	66	64	121	133	66	76
		0604	25	27	16	23	25	31	36	36	23	27	31	30	48	59	31	32
		0605	29	38	25	23	33	40	32	40	18	18	21	18	26	31	24	24
Riverside	07.00	0701	56	71	71	74	98	101	39	43	39	51	76	99	42	56	33	38
		0702	104	130	74	99	77	103	40	52	43	49	79	102	41	49	31	36
	08.00	0801	21	28	15	14	19	24	12	9	16	16	24	28	5	11	10	11
		0802	5	5	3	5	3	2	3	4	3	5	6	5	2	3	2	2
Eastside	09.00	0901	7	11	10	14	11	12	10	14	7	8	8	9	10	19	9	8
		0902					1		2		2	3						
		0903	38	48	47	48	31	40	10	14	21	23	13	13	10	9	17	22
		0904	58	71	66	76	30	33	22	25	26	21	32	33	27	30	22	24
	17.00	1701	15	20	6	9	15	16	23	20	11	7	17	16	9	9	9	8
		1702	17	20	14	14	28	28	31	31	23	26	19	20	19	18	22	26
		1703	7	7	25	25	30	34	23	30	25	25	30	31	18	16	20	21
		1704	10	9	11	12	6	7	10	14	12	12	5	6	7	7	9	11
	20.00	2001	8	11	16	20	10	13	17	15	17	16	13	13	27	30	10	12
Midtown Brandywine	10.00	1001	1	1	3	1	1	1			1				2	3	3	3
		1002			3	5	1	1	2	5	3		1	1	1	1	1	1
Delaware Avenue	11.00	1101			1	1			1	1	1	1			1		3	
		1102			4	4	2	3	1	1	2		3	2	1			
		1103	6	9	1	2	9	8	8	7	12	11	2	4	4	2		4
	12.00	1201	4	11	1	1			1	1	2	3	1	1	1	2	1	1
		1202	3	3	3	4	4	5	4	3	5	4	3	5	5	2	3	3

**Table 6**  
**Drug Crime Complaints and Arrests by Neighborhood, Census Tract, and Grid (Page 2 of 2)**

Analysis Area	Census Tract	Grid	2003		2004		2005		2006		2007		2008		2009		2010	
			Complaints	Arrests	Complaints	Arrests	Complaints	Arrests	Complaints	Arrests	Complaints	Arrests	Complaints	Arrests	Complaints	Arrests	Complaints	Arrests
Bancroft Parkway	13.00	1301	1	1							1	1						
		1302											1	1				
		1303	1	1					1									
		1304			1		1		1		1							
		1305	1	1					1	1			3	4	1	1		
		1306	1	2		1	1	1	3	3	5		1	1	2	1	1	1
Hilltop	14.00	1401	1	3			5	6	4	7	7	6			2	2	5	5
		1402	11	13	7	9	7	8	14	11	12	10	12	13	6	7	10	9
	15.00	1501	6	9	3	4	5	4	5	9	2	2	4	5	5	5	5	6
		1502	36	47	28	33	46	58	33	36	21	23	16	15	20	22	13	18
	22.00	2201	82	96	86	94	94	116	110	115	122	141	96	110	96	108	69	71
		2202	92	129	55	70	48	57	67	72	65	67	77	98	29	32	38	42
	23.00	2301	92	108	81	90	129	156	124	131	112	121	151	173	101	105	116	128
		2302	53	68	63	74	36	47	51	63	48	56	46	55	49	56	45	57
West Center City	16.00	1601	28	32	11	11	17	22	30	25	22	23	25	27	19	29	29	32
		1602	71	79	44	44	66	82	58	56	42	44	50	49	67	73	64	72
	21.00	2101	36	51	29	34	24	28	49	55	32	33	19	19	24	26	25	27
		2102	74	81	63	63	60	52	39	44	52	58	44	46	44	54	47	50
Cherry Island	18.00	1801			2	4	3	5					3	3	1	1		
		1802					1	1									1	2
South Wilmington	19.00	1901	4	5	2	1		2	4						3	3	2	2
		1902	3	4	2	2	2	2	1	3								
		1903					2	3		4	1	1	1		1	1		
		1904			2	2	1	2					1					
		1905	5	5	7	11	4	9	16	18	13	15	15	15	2	3		10
		1906		3	5	6	7	13	5	7	3	3	1	1			12	1
		1907							1	1			1				1	
		1908	12	17	6	4	9	9	13	18	15	13	7	7	17	18	10	10
		1909	24	32	43	44	4	4	1	3	1	1	2	2			2	3
Southwest	24.00	2401	4	5	6	7	1	2	6	5	3	2	2	1			1	2
		2402	2	2	5	6	3	3	7	5	4	6	5	7	5	8	2	4
		2403	4	5	2	1	6	9	5	8	8	8	5	3	2	4	9	9
		2404	4	6	1	1	2	4	6	10	8	7	2	2	1	1	5	5
		2405	1	2	2	2	4	4	6	9	3	6	1	1	2	2	3	3
Browntown/Hedgeville	25.00	2501	8	10	4	5	6	13	5	4	4	5	2	2	5	6	6	5
		2502	4	7	2	4	2	3	6	6	2	3	7	8	8	8	5	4
		2503	2	2	2	1	2	6	8	18	6	7	6	9	3	5	5	4
		2504	1	3	1	1	2	5	2	3	1	2	1	1	2	3	2	2
	26.00	2601	21	30	22	31	27	38	41	36	23	22	47	51	34	33	27	24
		2602	9	9	8	16	10	14	6	5	16	19	16	19	11	16	15	13
	27.00	2701	14	19	8	14	21	29	17	29	23	28	17	16	20	24	19	20
		2702	5	5	1	1	3	6	7	16	5	4	4	4	3	3	3	6

**Table 7**  
**Violent and Illicit Drug Crime Summary - 2003 to 2010**

			Year													
			2003	2004		2005		2006		2007		2008		2009	2010	09-10 Change
Assault	Complaints	CT 6.02	45	76	68.9%	47	-38.2%	61	29.8%	33	-45.9%	34	3.0%	61	64	4.9%
		Wilmington	597	704	17.9%	571	-18.9%	797	39.6%	438	-45.0%	429	-2.1%	680	594	-12.6%
	Arrests	CT 6.02	26	23	-11.5%	20	-13.0%	26	30.0%	35	34.6%	18	-48.6%	20	24	20.0%
		Wilmington	271	243	-10.3%	142	-41.6%	206	45.1%	300	45.6%	259	-13.7%	272	279	2.6%
Burglary	Complaints	CT 6.02	46	59	28.3%	65	10.2%	64	-1.5%	46	-28.1%	63	37.0%	69	88	27.5%
		Wilmington	918	838	-8.7%	942	12.4%	1,141	21.1%	777	-31.9%	904	16.3%	907	1,232	35.8%
	Arrests	CT 6.02	9	9	0.0%	22	144.4%	18	-18.2%	20	11.1%	12	-40.0%	10	19	90.0%
		Wilmington	179	146	-18.4%	140	-4.1%	150	7.1%	169	12.7%	198	17.2%	186	200	7.5%
Homicide	Complaints	CT 6.02	1	2	100.0%	1	-50.0%	6	500.0%	1	-83.3%	4	300.0%	1	5	400.0%
		Wilmington	17	19	11.8%	14	-26.3%	38	171.4%	16	-57.9%	38	137.5%	18	30	66.7%
	Arrests	CT 6.02	3	3	0.0%		-100.0%	6	n/a		-100.0%	2	n/a	5	1	-80.0%
		Wilmington	13	15	15.4%	15	0.0%	22	46.7%	12	-45.5%	28	133.3%	32	23	-28.1%
Robbery	Complaints	CT 6.02	17	43	152.9%	28	-34.9%	35	25.0%	36	2.9%	29	-19.4%	31	41	32.3%
		Wilmington	451	539	19.5%	451	-16.3%	625	38.6%	647	3.5%	577	-10.8%	491	600	22.2%
	Arrests	CT 6.02	6	14	133.3%	17	21.4%	14	-17.6%	20	42.9%	8	-60.0%	14	16	14.3%
		Wilmington	132	164	24.2%	160	-2.4%	199	24.4%	213	7.0%	219	2.8%	214	172	-19.6%
Weapons	Complaints	CT 6.02	35	65	85.7%	44	-32.3%	49	11.4%	48	-2.0%	51	6.3%	48	68	41.7%
		Wilmington	537	591	10.1%	534	-9.6%	717	34.3%	702	-2.1%	753	7.3%	648	682	5.2%
	Arrests	CT 6.02	36	38	5.6%	54	42.1%	65	20.4%	39	-40.0%	43	10.3%	33	33	0.0%
		Wilmington	468	429	-8.3%	423	-1.4%	530	25.3%	450	-15.1%	466	3.6%	442	411	-7.0%
Drugs	Complaints	CT 6.02	103	92	-10.7%	114	23.9%	100	-12.3%	99	-1.0%	94	-5.1%	168	104	-38.1%
		Wilmington	1,372	1,247	-9.1%	1,354	8.6%	1,344	-0.7%	1,227	-8.7%	1,317	7.3%	1,256	1,170	-6.8%
	Arrests	CT 6.02	126	104	-17.5%	276	165.4%	212	-23.2%	175	-17.5%	100	-42.9%	189	115	-39.2%
		Wilmington	1,703	1,409	-17.3%	1,805	28.1%	1,647	-8.8%	1,371	-16.8%	1,461	6.6%	1,408	1,288	-8.5%

